

# Navigate with digital charts

Recommendations for WinGPS 4 users

Updated on the 14<sup>th</sup> of July 2010

An overview of recommended WinGPS versions, available digital charts, databases, nautical charts, pilots en nautical guides. Most products are in stock at Stentec or dealers. For more information please visit [www.stentec.com](http://www.stentec.com).



## WinGPS 4-series

**WinGPS 4 Navigator** (6103) – Is the basic program for GPS-navigation and comes with options like planning your own routes, making journals and integrated Grib files.

**WinGPS 4 Pro** (6123) –Navigation for motorboat- and inland navigation. Suited for connecting multiple NMEA-instruments like an AP and AIS with collision alarm. Comes with rotating map option.

**WinGPS 4 Voyager** (6126) – For cruise and shortsea shipping, voyaging and competitive sailing. Over 500 users and polar diagrams of more than 1400 sailing boats. This means a significant increase of safety on board and a big advantage in races!

**WinGPS 4 Mobile Navigator** (6102) – PocketPC version for navigating with routes, journals and a wind vector.

**DKW Builder** (6106) – software for creating DKW2 charts for all WinGPS 4 versions. Scanned nautical charts or Google Earth screenshots can be used as digital chart.

## Available digital charts

Stentec publishes digital charts in the DKW2 format for WinGPS4. These charts come with an online update service. Examples are the DKW1800 charts, the German Bight, the English East coast, Imray and Belgium waterways.

You could also install digital charts of NV-verlag in nv.digital format with the DKW manager. Examples are the Baltic Sea combipacks NV1..4. These packs contain some nautical chart sets, a pilot and a CD-rom. Finnish charts of Soltek (from Sweden) in encrypted BSB3 format are also available.

With the DKW manager you can easily install BSB charts like the free BSB charts of the NOAA for US territory and protected BSB4 CD-rom's.

## Databases

Stentec can also provide in waypoint databases with geo-tourist (almanac) information, like the Marrekrite (natural moorings) (7629), ANWB water sport accommodations (7628) and Bridges & Locks Almanac (7630). Easy to install for all WinGPS 4 versions and ideal for inland waterways.

## Charts, pilots en sailing guides

Navigating with merely digital charts is not recommended. You should at least have a track chart and a pilot or sailing guide. Stentec has the best selling Imray C-series charts and pilots in stock. Other Imray charts and pilots like given on [www.imray.com](http://www.imray.com) are ready for delivery in one week.

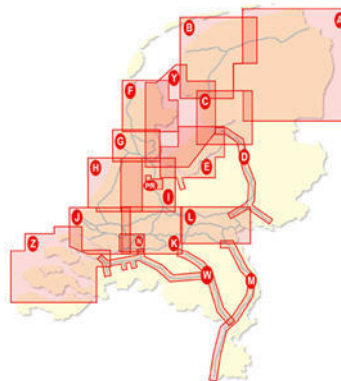
*See also the [C-series](#), [2000 series folios](#), [M-series](#), [G-series](#) and [E-series](#) charts from Imray.*

## Dutch inland waterways

WinGPS4 navigator fully supports databases and planning of routes. A 7-day Grib weather forecast is also provided with the software. WinGPS 4 Pro allows the user to see other inland vessels with AIS. In the nearby future AIS will be obliged for inland vessels.

### ANWB The Netherlands 2010

Every year the ANWB updates half of her charts. The ANWB does not provide a weekly update service like the partially overlapping **DKW 1800 charts**. Therefore navigating on buoys is not recommended. For the IJsselmeer/Markermeer and the waters in Zeeland the DKW1800 chart set is recommended. The ANWB digital charts are also available as a retail version on CD-rom.



ANWB water sport accommodations 2009 (7628) (2010 edition expected in June)

Bridges & Locks Almanac The Netherlands 2010 (7630)

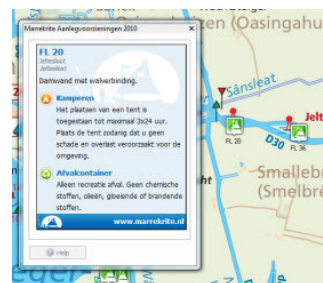
Recommended addition to the ANWB and DKW1800 charts. It contains hours of opening, clearances, and thresholds of over 3000 bridges, locks and other objects in the VIN database of the Ministry of Transport, Public Works and Water Management. Most of the objects are provided with a photograph. By sliding the time control bar, you are able to see when bridges or locks are operated quickly.

## Friesland

WinGPS 4 Lite or WinGPS 4 Navigator

**ANWB chart B Friesland** (also included in **ANWB North** and **ANWB the Netherlands**)

Marrekrite 2010 database (7629)



New: Navigation almanac CD for WinGPS (6630)

Combines the most recent version of the Bridges & Locks almanac, Marrekrite and ANWB water sport accommodations. Recommended with this CD are ANWB and DKW1800 charts.



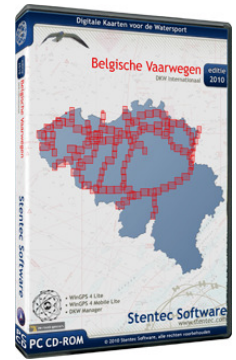
## Belgian inland waterways

WinGPS 4 Lite or WinGPS 4 Navigator

### DKW Belgium Waterways 2010 (3410)– New !

Nautical Atlas & Guide of the Belgian inland waterways (3210).

*Due to opening hours of bridges and additional waterway information recommended for the DKW Belgium Waterways 2010.*

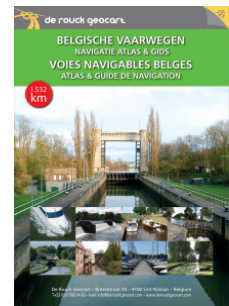


### Other De Rouck Geocart products:

Navigable Belgian waterways (3211) (map with 4 nautical charts)

Harbor map of Antwerp (3212)(chart with quay numbers and tourist information)

Harbor map of Bruges (3213)(chart expected in July)



## Berlin inland waterways

In and around Berlin (1 to 4 of NV-Verlag)

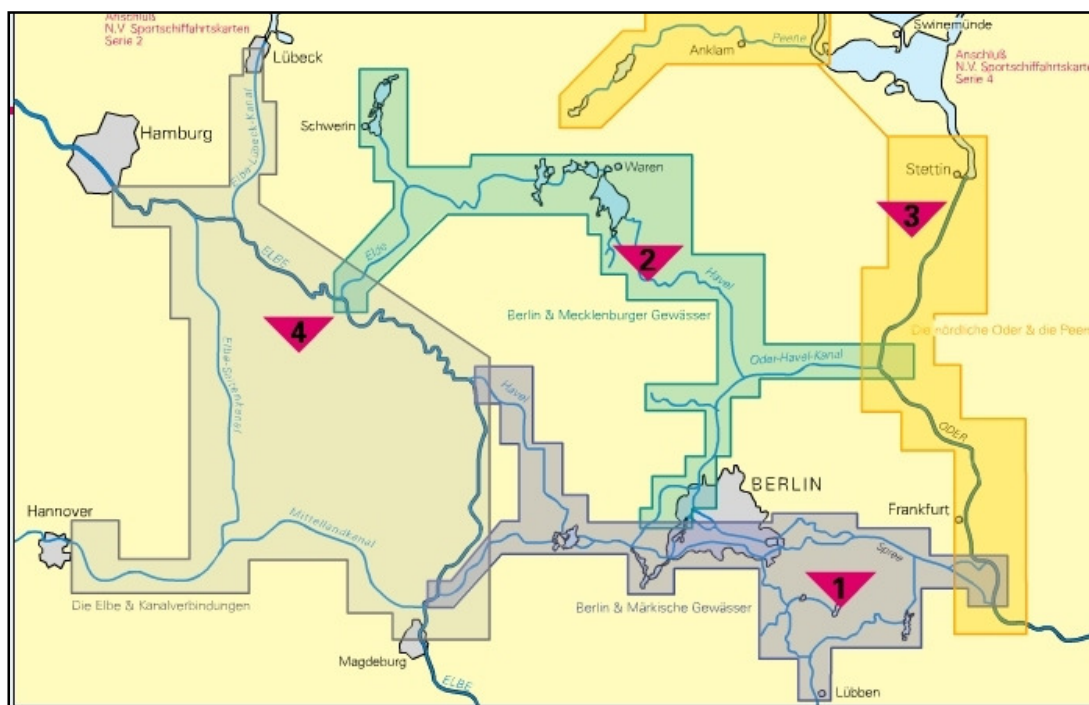
Atlas with spiral binding and CD-rom

**CPNVB1 (6501)** Berlin & Märkische Gewässer

**CPNVB2 (6502)** Berlin & Mecklenburger Gewässer

**CPNVB3 (6500)** Northern Oderand Peene

**CPNVB4 (6503)** Elbe and Channel connections

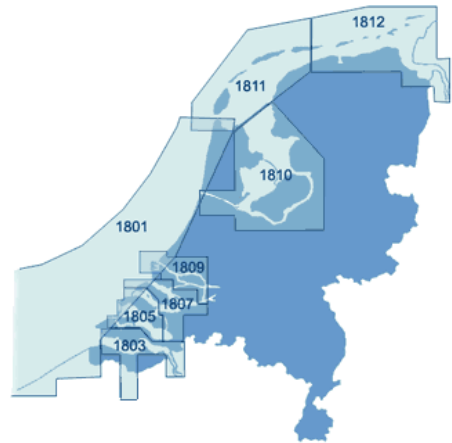


## Stentec's DKW 1800-series

Weekly BaZ Update service, free for current edition

On sale per chart or as **North** (1801, 1810, 1811, 1812), **South** (1803, 1805, 1807, 1809) or **Complete (6209)** on CD-rom or as download.

Advantageous **DKW1800 Complete Upgrade (6210)** from previous version



## IJsselmeer/Markermeer

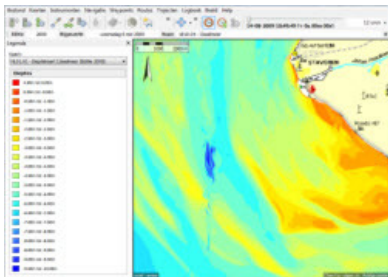
WinGPS 4 Navigator of better.

**DKW 1810** IJsselmeer, Markermeren en Randmeren.

*This chart set is also available in advantageous combinations **DKW1800 North** en **DKW1800 Complete***

DKW bathymetric chart IJsselmeer/Markermeer for competitive sailing (ideal for the 24 hours).

Digital golf atlas IJsselmeer for cruise and competitive sailing (including Markermeer)



## Wadden Sea

*WinGPS 4 Voyager for sailors. Just like WinGPS 4 Pro, Voyager offers current and tide information with an annual free update. It is easy to determine the optimal route and sailing time with Voyager, taking speed, wind and tides into account.*

*NLTides is available on CD for Navigator users with data of the tides until the end of the year. The area covers the Dutch part of the Wadden Sea, Zeeuwse waters and the North Sea.*

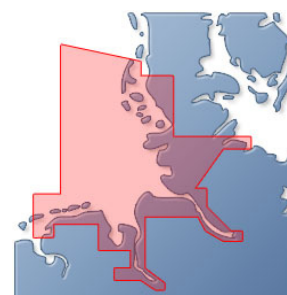
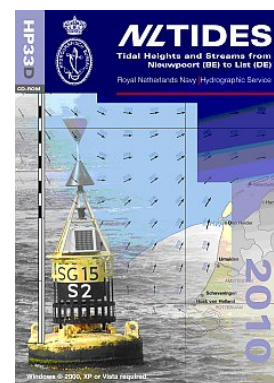
**DKW1811** Wadden Sea West and **DKW1812** Wadden Sea East.

These charts can be also found in the advantageous combinations **DKW1800 North** and **DKW1800 Complete**.

*The weekly BaZ update service is important for the changeable Wadden Sea. This service only works for the most recent version of any WinGPS version. There is an annual advantageous upgrade for the DKW1800 Complete.*

**DKW German Bight** connects perfectly to the DKW1812 Wadden Sea West.

*The Pro and Voyager allow you to download the 3-day Grib weather forecast of the BSH for this chart.*



## Zeeuwse waters

WinGPS 4 Pro or Voyager with integrated NLTides data for navigating on open water.

**DKW 1800 South** with weekly updates. This set does not contain the DKW1801 North Sea coast. Both areas can be found in the **DKW1800 Complete**.

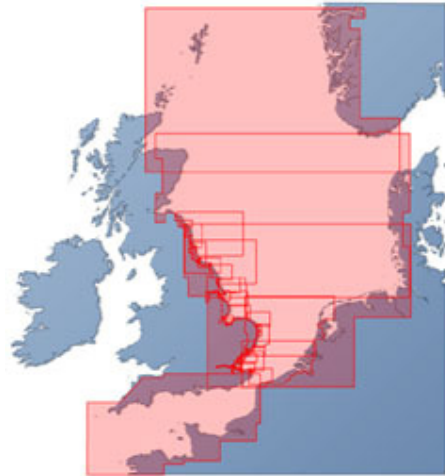
*The ANWB South is an alternative chart for this area. However, this chart is not recommended because of the unreliable waters like the Western Scheldt. Recent changes in the position of buoys and depths are not visible because this chart will be updated every two years.*



## Crossing to the UK

WinGPS 4 Voyager

*Astronomical tidal current data for a year is integrated in Voyager and covers the North Sea. Recent UK tidal data is available as TCD file on the internet and can be imported into Voyager. For more information, please consult the manual of WinGPS4 Voyager.*



**DKW English East Coast** including track charts from the UK to The Netherlands.

*The Imray ID-10 is an alternative. The set also includes detailed maps of the Scottish coast. Unlike the DKW UK East Coast, this set does not cover the London area.*

North Sea Passage Pilot (Imray)

East Coast Pilot (Imray)

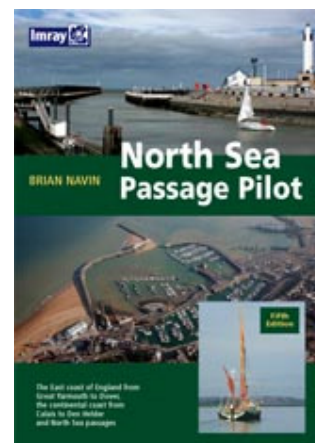
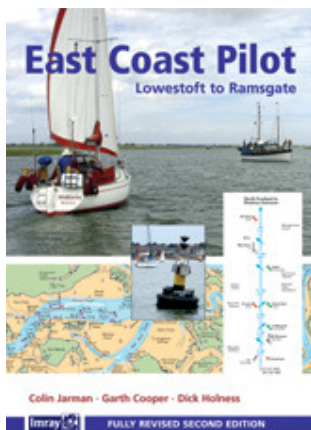
Imray C25 - Harwich to River Humber and Holland

Imray C1 - Thames Estuary

Imray C2 - The River Thames

Imray C28 - Harwich to Wells-next-the-Sea

Imray C29 - Harwich to Whitby



## English South Coast

WinGPS 4 Voyager

*Astronomical tidal current data for a year is integrated in Voyager and covers the North Sea. Voyager allows the user to download a 3 days weather forecast until 4 degrees West as BSH Grib files. Recent UK tidal data is available as TCD file on the internet and can be imported into Voyager. Information on tides for the French and Irish coast is available as TCD files in WXTides. For more information, please consult the manual of WinGPS4 Voyager.*



**DKW Imray ID-20** English Channel with detailed maps of the English South Coast, Channel Islands and the North West Coast of France.

Shell Channel Pilot (Imray) with detailed charts and data on currents.

Imray C8 - Dover Strait

Imray C9 - Beachy Head to Isle of Wight

Imray C3 - Isle of Wight (incl. Solent)

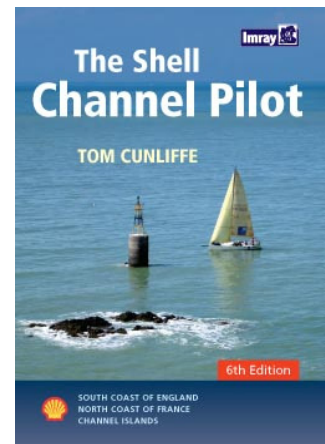
Imray C10 - Western English Channel Passage Chart

Imray C12 - Eastern English Channel

Imray C31 - Dover Strait to Le Havre

Imray C32 - Baie de Seine

Imray C33A - Channel Islands (North)



## Ireland and the British West Coast

WinGPS 4 Voyager

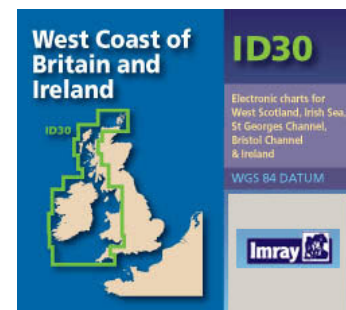
**DKW Imray-ID30** West Coast of Britain and Ireland

Cruising Pilot and Tide tables (Imray)

### Sailing interpretations and dictionary

**Sailing interpreter (7052)** is a piece of software for water sports enthusiasts in English or Dutch waters and readers of English or Dutch water sports books or magazines. The Sailing interpreter allows the user to translate 16.000 sailing words or concepts from English into Dutch and vice versa.

**Sailing dictionary (7053)** is a computerized dictionary program that contains Dutch words, expressions, acronyms and abbreviations, and corresponding interpretations. This dictionary is almost as detailed as a lexicon.





## Denmark

WinGPS 4 Voyager

**DKW German Bight** covers the area to the Danish border.

**NVDK1** Danish West Coast (2006)

**NV Combipack Limfjorden**, Thyboren to Hals  
Imray C26 - IJmuiden to die Elbe

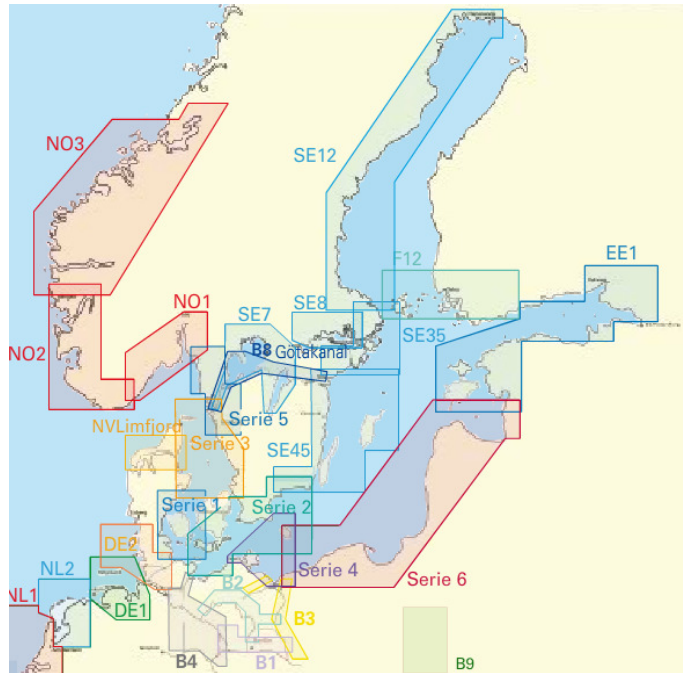
## Norway

WinGPS 4 Voyager

**NVNO1** Norway, Oslofjord to Lindesnes

**NVNO2** Norway, Lindesnes to Bergen

**NVNO3** Norway, Bergen to Trondheim



## Baltic Sea

WinGPS 4 Voyager

*Currents in the Baltic Sea are available as a 3 day forecast on the BSH website and can be downloaded with Voyager.*

*For a journey to the Baltic Sea you will need the DKW German Bight an Imray C26 – IJmuiden to die Elbe.*

**NV1-4** Combipacks (CD-rom plus paper chart set)

**NV6** Combipack Polish Baltic coast

**NVEE1** incl. Russia St. Peterburg and Vyborg

**NVSE1** Sweden, Gulf of Bothnia, Arholma to Haparanda

**NVSE35** Sweden, Stockholm Skärgeard, Götakanaal to Arholma

**NVSE45** Zwenen Oostkust, Hanö Bay tot Göta Kanaal

## Sweden en Finland

WinGPS 4 Voyager

**NV5** Swedish West Coast

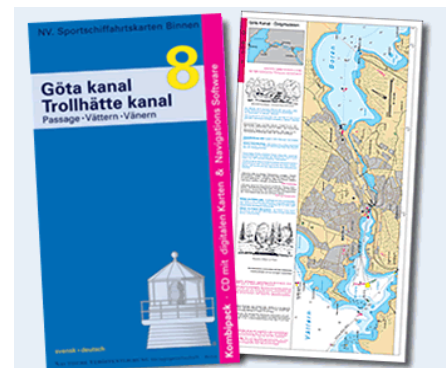
**CPNVB8** Göta Kanal & Trollhätte Kanal (atlas plus CD)

**SCD7** Vänern · Vättern

**SCD8** Mälaren/Hjälmaren

**FCD10** Finland, Gulf of Finland

**FCD11** Finland, Aaland Skärgeard



## Atlantic coast of France to Gibraltar

WinGPS 4 Voyager

**DKW-Imray ID40** Atlantic France and Iberia

Cruising Almanac and Tide tables (Imray)

Navicarte Folio's in nv-digital format of 2008:

**NVFATL1** Folio ATL01, France, Bretagne Sud

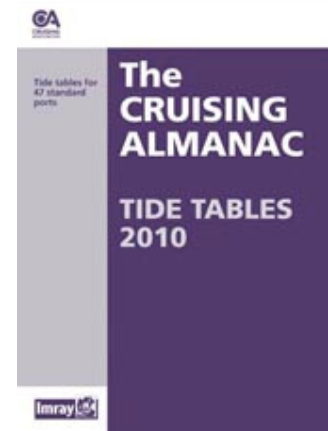
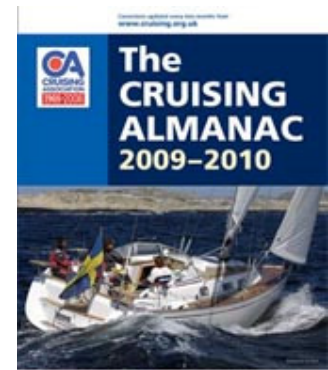
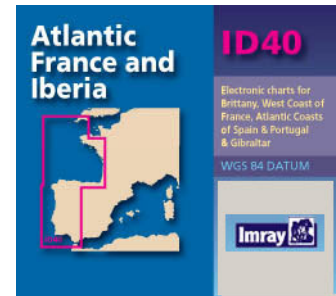
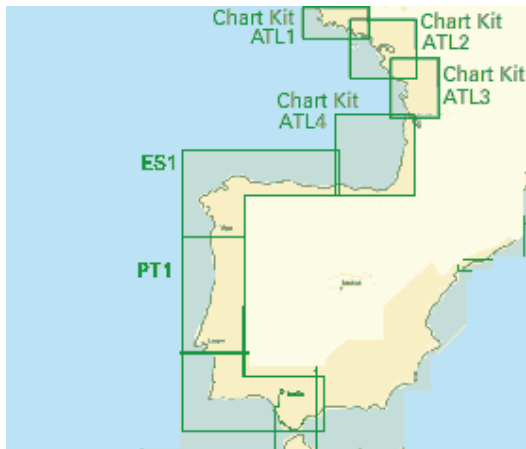
**NVFATL2** Folio ATL02, France, Morbihan/Loire

**NVFATL3** Folio ATL03, France, Charente/vendée

**NVFATL4** Folio ATL04, France, d' Arcachon á Santander

**NVES1** Spain North

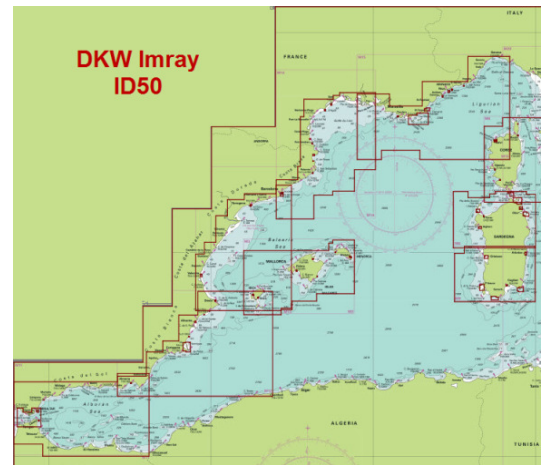
**NVPT1** Cape Finisterre to Gibraltar



## Mediterranean Sea

WinGPS 4 Voyager

**DKW-Imray ID50** Mediterranean Sea West  
(European Coast)



Navicarte 2008 cd's in nv-digital format.:

**NVES2** Mediterranean Coast of Spain

**NVFMED2** Folio MED02, France, Corse - Nord Sardaigne - Ile d'Elba

**NVFMED3** Folio MED03, France, Côte d'Azur - French Riviera

**NVFMED4** Folio MED04, France, Golf du Lyon

**NVFMED5** Folio MED05, Spain, Cerbere to Barcelona

**NVFMED1** Folio MED01, Balearen: Ibiza tot Menorca

**NVHR1** Croatia, incl. Slovenia, Montenegro and Albania

**NVGR1** Greece, Ionian Coast incl. Gulf of Corinth

**NVGR2** Greece, Athens, Cyclades and Crete

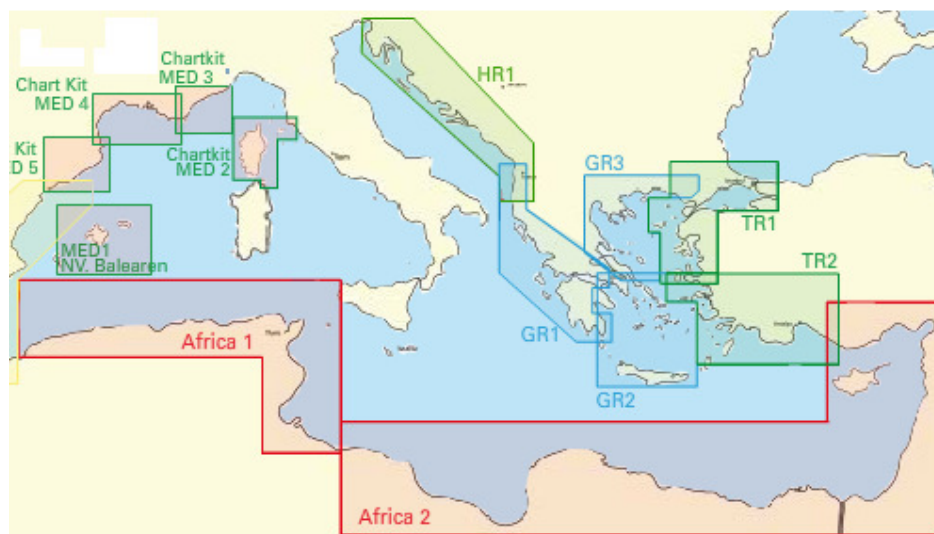
**NVGR3** Greece, Aegean Coast

**NVTR1** Turkey Northwest, Istanbul to Kusadasi

**NVTR2** Turkey Southwest, Kusadasi to Antalya

**NVAF1** Mediterranean, Algeria and Tunisia

**NVAF2** Mediterranean, Libya to Cyprus, Suez Canal



## Caribbean area

WinGPS 4 Voyager

DKW-IMRAY-ID100 Eastern Caribbean

**NVR8.1** Folio Reg. 8.1 Florida, Eastcoast North

**NVR8.2** Folio Reg. 8.2 Florida, Eastcoast South

**NVR9.1** Folio Reg. 9.1 North West Bahamas

**NVR9.2** Folio Reg. 9.2 Central Bahamas

**NVR9.3** Folio Reg. 9.3 South East Bahamas

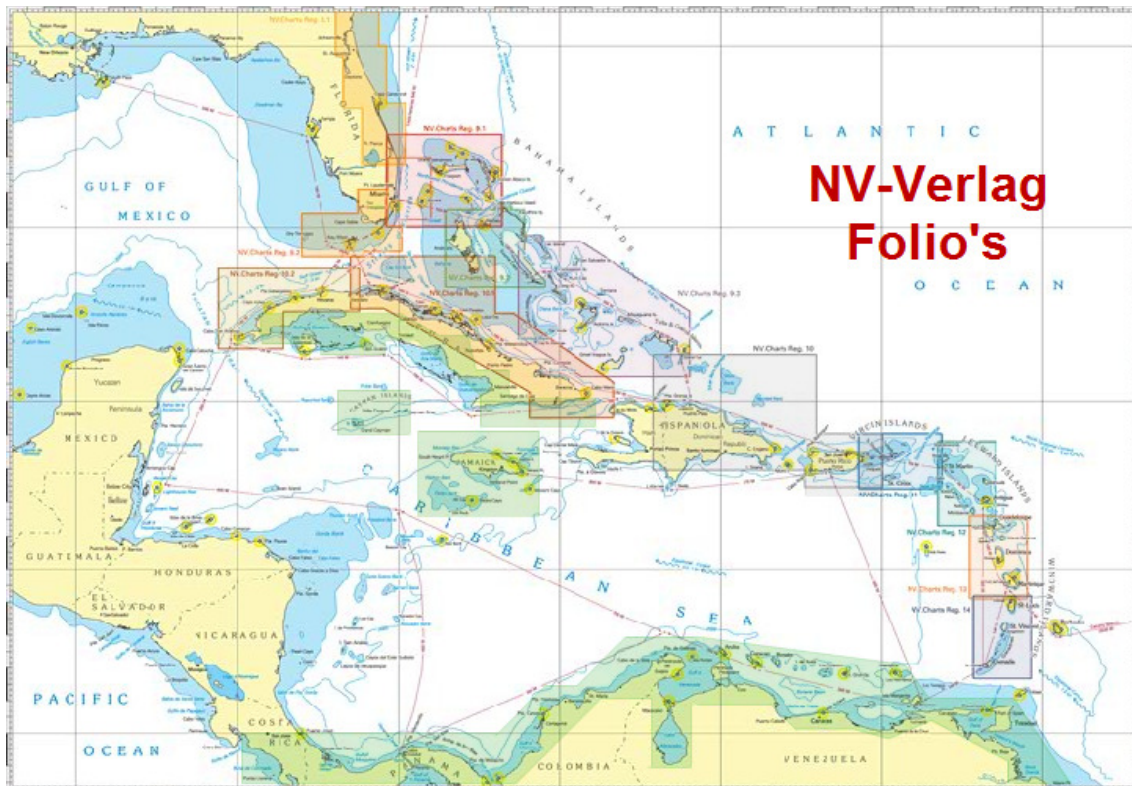
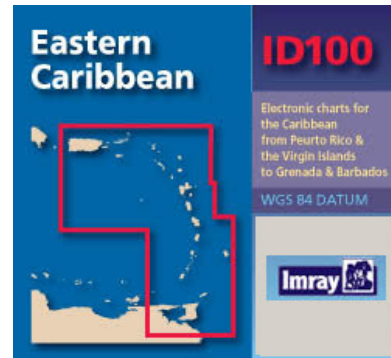
**NVR10** Folio Reg. 10 Puerto Rico

**NVR11** Folio Reg. 11. Virgin Islands

**NVR12** Folio Reg. 12 Leeward Islands

**NVR13** Folio Reg. 13 Lee & Windward Islands

**NVR14** Reg. 14 Windward Islands



## Travel around the world

WinGPS 4 Voyager

DKW World is a free chart for planning your route and ideal for Grib files of

[www.stentec.com/anonftp/pub/dkw/stentec-dkw-world.chv](http://www.stentec.com/anonftp/pub/dkw/stentec-dkw-world.chv)

**NVAT1** including Bermuda, Azores, Madeira, Canary Islands and Gibraltar

**NVAF7** Africa West Coast, Senegal to Gulf of Guinea

**NVAO2** South Atlantic Ocean

**NVAO3** Atlantic Ocean, Falkland Islands

**NVIN2** Indic Ocean, Persian Gulf, Gulf of Oman

For US territory, updated Raster Navigational Charts (RNC's) are available in BSB format and are free to download at [www.charts.noaa.gov](http://www.charts.noaa.gov). The NOAA is the American meteorological service. Use the DKW manager to install these BSB chart sets for WinGPS 4.

